



東業德勤測試顧問有限公司  
**ETS-TESTCONSULT LTD.**<sup>™</sup>

提供獨立  
**專業測試，檢測及顧問服務**

Providing Independent  
**PROFESSIONAL TESTING,  
INSPECTING & CONSULTING**  
Services



8/F Block B, Veristrong Industrial Centre, 34-36 Au Pui Wan Street, Fo Tan, Hong Kong

T: +852 2695 8318

F: +852 2695 3944

E: [etl@ets-testconsult.com](mailto:etl@ets-testconsult.com)

W: [www.ets-testconsult.com](http://www.ets-testconsult.com)

## 互動小冊子

為協助你更快搜尋所需的資訊，我們已在產品目錄內，建立了適用的鏈接。

- 要**移動頁面**，只需在每版頁面的底部前後來回移動或點擊 < 和 > 的按鈕。
- 要返回到**目錄**，請點擊每版頁面的**右下角**。
- 要在**目錄**中查看部門的**網頁**，請點擊目錄內的**部門名稱**。
- 要查閱部門的**網頁**，請點擊任何**部門的影像**。
- 要查閱網站的**主頁**，請點擊在每版頁面**左下角**的**公司標誌**或**網站地址**。

## Interactive Brochure

We have created a number of helpful links in our Product Catalogue to help you get the information you need quickly.

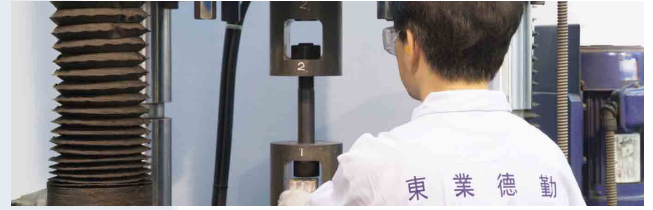
- To **move pages**, simply **scroll** or click the < and > buttons at the bottom of each page to go back and forwards.
- To return to the **Contents** page, click the at the **bottom right** corner of each page.
- To view a department's **page in the catalogue**, click on the **department name** on the contents page.
- To view a department's **webpage**, click on **any department image**.
- To view to our **website homepage**, click on our **logo** or **website address** at the **bottom left** corner of each page.

# 目錄 CONTENTS

---

<b>公司簡介 COMPANY PROFILE</b>	<b>Page 1</b>
<b>檢驗服務 INSPECTION</b> 無損探傷測試 Non-Destructive Testing 物理測試 Physical Testing 檢驗服務 Inspection Services	<b>Page 2</b>
<b>環境及化學 ENVIRONMENTAL &amp; CHEMICAL</b> 微生物測試 Microbiological Testing 化學測試 Chemical Testing 環境監測及測試 Environmental Testing 石棉鑒定及監測 Asbestos Services	<b>Page 3</b>
<b>校準服務 CALIBRATION</b> 尺寸校準 Dimensional Calibration 力，扭力校準 Force & Torque Calibration 電子，電氣校準 Electrical Calibration 溫度，濕度校準 Temperature & Humidity Calibration 重量，磅秤校準 Weight & Balance Calibration 壓力校準 Pressure Calibration 其他類別校準 Miscellaneous Calibration	<b>Page 4</b>
<b>建築材料 CONSTRUCTION MATERIALS</b> 泥土和岩石合成材料 Soil & Rock Geosynthetics 混凝土及成份 Concrete & Constituents Testing	<b>Page 5</b>
<b>結構診斷 STRUCTURAL DIAGNOSTICS</b> 樓宇安全檢驗 Building Safety Inspection 地基測試 Foundation Inspection 滲漏檢測 Water Seepage Detection 監測 Monitoring	<b>Page 6</b>
<b>貿易 TRADING</b> 熱處理機組 Heat Treatment Units 溫度測量與熱電偶點焊機 Temperature Measuring & Thermocouple Welding Equipment 陶瓷塊 Ceramic Beads 電熱陶瓷塊墊 Ceramic Heater Pads 電纜和電線 Cables & Wires 熱電偶插頭，插座和連接器 Plugs, Sockets & Connectors 絕緣製品 Insulation Products 熱處理配件及備件 Heat Treatment Accessories & Spares	<b>Page 7</b>
<b>董事及管理團隊 MEET THE EXPERTS</b>	<b>Page 8</b>

## 公司簡介 COMPANY PROFILE



### 我們的使命

東業德勤測試顧問有限公司（“東業德勤”）為建築、工程及相關行業的客戶廣泛提供優質及有效率的檢驗測試服務，並提供獨立專業報告。

### 我們的服務

東業德勤提供不同範疇的優質測試檢驗服務，其中包括金屬、建築、泥土和岩石、校準、環保和化學的檢驗測試，在市場上已建立多年的良好聲譽。

本公司營銷各類熱處理儀器和配件，同時提供各樣香港認可處認可的測試和服務。過去多年，我們曾參與多個中國、澳門和香港重大的工程項目。欲瞭解我們更多的服務範圍，請點擊[這裡](#)。

每位員工對我們來說是很重要的，這亦是我們重視職業健康和安全的原因，確保每位員工能開心上班，安全回家。



### Our Mission

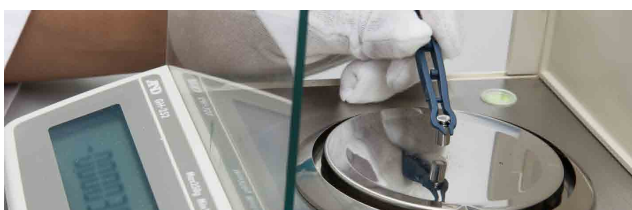
ETS-Testconsult Ltd (ETL) delivers superior testing and inspection services, supported by totally unbiased and independent reporting, to the construction, engineering and associated industries.

### What We Do

ETL has a long-standing reputation for providing a wide range of tests and inspection services in Inspection, Construction, Soil & Rock, Calibration and Environmental & Chemical, all to a high standard.

As well as trading components for Heat Treatment testing, ETL offers a range of HKAS-approved tests and services and has worked on major projects in Hong Kong, Macau and China over the years. Click [here](#) for more details about our range of services.

Each individual in our organisation is important to us, and this is underlined by the emphasis we place on Occupational Health and Safety, to ensure that every day everyone returns home fit and safely.



無損探傷測試  
NON-DESTRUCTIVE  
TESTING



物理測試  
PHYSICAL  
TESTING



檢驗服務  
INSPECTION  
SERVICES



## 檢驗服務

東業德勤具備全港最大的金屬測試檢驗服務的部門。我們擁有超過40年累積經驗的專業團隊，提供國際高水平無損探傷，物理試驗和勘察的測試檢驗服務。

我們無損探傷部門是由一群富有多年經驗且高水準的無損探傷測試的工程師和技術人員組成。自一九六六年以來，該部門參與過香港多項大型工程。本公司的物理測試部門提供各種各樣的物理測試服務，當中包括超過40個種類的物料，如：金屬材料、焊接材料、鋼筋、緊固件和螺母等。本公司的檢驗部門是經香港認可處之檢驗機構認可計劃的認可，為水務產品、焊接工序和焊工資格等，提供獨立和公正的檢驗服務，並獲得高度的評價。

本公司經驗豐富的工程師參與過不少大型政府建設項目，如青馬大橋、赤臘角機場、中區政府合署、香港會議展覽中心、昂船洲大橋、M+大樓和其他大型項目。除此以外，我們參與的項目：包括鐵路建設、發電廠、自來水廠、石油和海洋相關的項目等等。

## Inspection

ETL is the biggest inspection services department in Hong Kong. With over 40 years experience, our team of dedicated professionals provide services in Non-Destructive Testing, Physical Testing and Inspection, all carried out to high international standards.

Our Non-Destructive Testing (NDT) engineers are highly qualified and experienced, having worked on most major projects in Hong Kong since 1966. ETL's Physical Testing division offers a wide variety of services, spanning over 40 test items, which cover a broad range of materials including Metallic Materials, Welded Materials, Reinforcing Steel Bars, Fasteners & Nuts and more. Offering independent and impartial services, ETL's Inspection division is HKIAS accredited and highly qualified in assessing Waterworks Products, Welding Procedures and Welder Qualification Testing.

Our experienced engineers have been involved in major civil and construction projects such as Tsing Ma Bridge, Chep Lap Kok Airport, Central Government Offices, Hong Kong Convention & Exhibition Centre, Stonecutters Bridge, Museum Plus (M+) Projects and many others. We have also carried out works for components in rail construction projects, power generation plants, waterworks, petroleum and the marine industry, amongst others.

## 微生物測試 MICROBIOLOGICAL TESTING



## 化學測試 CHEMICAL TESTING



## 環境監測及測試 ENVIRONMENTAL TESTING



## 石棉鑒定及監測 ASBESTOS SERVICES



### 環境及化學

東業德勤在環境及化學測試方面，擁有超過廿年的經驗，公司具備先進儀器和設備完善的實驗室，運用不少獲得香港實驗所認可計劃之認可的技術，提供獨立微生物、環境化學和石棉測試的服務。

在二零一四年，本公司的環境化學部門擴大了服務範圍，新增微生物分析部門，該部門訓練有素的專業人員在先進的儀器和設施協助下，為顧客提供更全面的服務。

我們經驗豐富的工程師參與過大型工程項目，包括：港珠澳大橋連接香港口岸、港鐵沙田至中環高速鐵路、水務署更換及修復於離島的水管工程、昂船洲污水處理廠及中環灣仔繞道。

### Environmental & Chemical

With over 20 years experience in Environmental & Chemical Testing, ETL's well-equipped laboratories have high-tech instrumentation to provide a full range of independent testing services in Microbiology, Chemical, Environmental and Asbestos, with many analytical techniques accredited by HOKLAS.

In 2014, ETL's Environmental & Chemical division expanded its range of services by adding a Microbiology section. With its state-of-the-art facilities and instrumentation, our highly-trained professionals provide specialist skills to offer a fully-comprehensive service to our customers.

Our experienced engineers have worked on major projects in Hong Kong such as Hong Kong-Zhuhai-Macao Bridge Hong Kong Boundary Crossing Facilities, MTR Sha Tin to Central Express Rail Link, Replacement and Rehabilitation of Water Mains for the Water Supplies Department on Outlying Islands, Stonecutters Island Sewage Treatment Works and the Central to Wan Chai Link Tunnel Bypass.

# 校準服務 CALIBRATION

## 尺寸校準 DIMENSIONAL CALIBRATION



## 溫度，濕度校準 TEMPERATURE & HUMIDITY



## 重量，磅秤校準 WEIGHT & BALANCE CALIBRATION



### 校準服務

這部門擁有超過十五年的經驗，提供多元化的校準服務，其中包括：建築材料的尺寸校正、力和扭力、溫度和濕度、電子和電氣、砝碼及天秤、時間和頻率等等。

這部門的專業校準專家採用最先進的計量設備，服務範圍廣泛，且已獲香港實驗所認可計劃和其他認證機構之認可。我們正不斷擴張及發展服務範圍，以滿足顧客的需求。我們的團隊確保在短時間內提交獨立公正報告，使我們成為全港最值得信賴提供校準服務的公司之一。

這部門曾參與過不少有名的項目，如：香港迪士尼樂園、香港房屋委員會公共租住房屋的發展計劃、港鐵沙田至中環高速鐵路、天水圍醫院、港珠澳大橋和香港醫院管理局項目。

## 壓力校準 PRESSURE CALIBRATION



### Calibration

ETL's Calibration division has over 15 years experience in delivering highly diversified Calibration Services, ranging from Dimensional, Construction Materials Testing, Force and Torque, Temperature and Humidity, Electronic and Electrical, Weight and Balance, and Time and Frequency, amongst others.

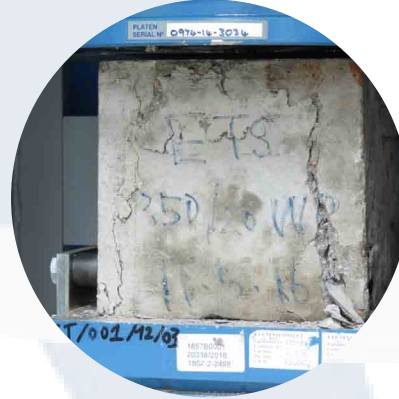
Offering a broad spectrum of accredited services (from HOKLAS and other accreditation bodies), our professional Calibration experts use the most advanced metrology equipment, whilst continually expanding and developing their range of services to meet customer needs. With a fast response rate and short calibration lead-times, our team offers invaluable independent reporting, ensuring our integrity is never jeopardized, making us one of Hong Kong's most trusted Calibration services providers.

The most notable projects our Calibration team has worked on are Hong Kong Disneyland, Hong Kong Housing Authority for Public Rental Housing Developments, MTR Sha Tin to Central Express Rail Link, Tin Shui Wai Hospital, Hong Kong-Zhuhai-Macao Bridge and the Hong Kong Hospital Authority projects.

## 泥土和岩石合成材料 SOIL & ROCK GEOSYNTHETICS



## 混凝土及成份 CONCRETE & CONSTITUENTS



### 建築材料

東業德勤是香港其中最早成立建築材料測試部門的公司之一，亦是工務司處其中一間認可為泥土和岩石測試的專門承辦商，提供了泥土和岩石合成材料和混凝土成份專門測試的服務。

本公司設有設備齊全的實驗室，提供香港實驗所認可計劃之認可的一系列建築材料測試服務，除此以外，我們亦能為顧客提供罕有的專門服務，例如：RCPT(快速氯離子滲透試驗)和混凝土吸水性測試。我們的專業團隊是由土木，結構和建築材料的專家所組成，皆是專業且具備多年豐富經驗。

在過去三十年，我們的專業團隊曾在香港參與的多項重大工程項目，當中有：港鐵沙田至中環高速鐵路、屯門至赤鱗角連接路及屯門西繞道、港珠澳大橋連接香港口岸、西九文化區、廣深港高速鐵路（高鐵）等等。

### Construction Materials

Specializing in Soil & Rock Geosynthetics testing and Concrete & Constituents testing, ETL's Construction Materials department is one of the most established in Hong Kong and is an approved Specialist Contractor for Public Works under Soil & Rock Testing.

Providing an extensive range of HOKLAS-accredited materials testing services from both our fully equipped laboratories and also out on site, we also offer specialized services that are not commonly available, such as RCPT and Water Absorption Concrete testing. Our professional team is made up of civil, structural, and materials' specialists, who are well qualified and experienced in their respective areas.

In our previous 30 years professional experience, we have provided test services to major projects in Hong Kong, such as MTR Sha Tin to Central Express Rail Link, Tuen Mun-Chek Lap Kok Link and Tuen Mun Western Bypass, Hong Kong-Zhuhai-Macao Bridge Hong Kong Boundary Crossing Facilities, West Kowloon Cultural District, Guangzhou-Shenzhen-Hong Kong Express Rail Link (Express Rail Link), amongst others.



# 結構診斷 STRUCTURAL DIAGNOSTICS & INSTRUMENTATION

樓宇安全檢驗  
BUILDING SAFETY  
INSPECTION



地基測試  
FOUNDATION  
TESTING



滲漏檢測  
WATER SEEPAGE  
DETECTOIN



## 結構勘察，儀器裝置及測試

具備香港認可處香港實驗所認可計劃之認可及擁有超過三十年經驗，我們專業工程師使用先進的儀器，為顧客提供無損性地基測試、結構診斷及準確獨立調查報告，還有提供及安裝監察岩土儀器和相關測試。

本部門提供廣泛的驗樓服務項目，團隊由國際認可機構的合資格人員所組成，提供如紅外線熱力測試、探地雷達、實驗室內進行的負載測試。這部門更為公司其他部門服務，如：校準和環保部門等。

這部門的專業工程師曾多次參與政府大型的建設項目，如啟德郵輪碼頭、香港國際機場內的海天客運碼頭、港珠澳大橋、深港高速鐵路、美利大廈改建為酒店的工程、新世界中心的重建工程、港鐵沙田至中環高速鐵路、公共房屋發展等等。

## Structural Diagnostics & Instrumentation

With HOKLAS accreditation and over 30 years of experience, our expert engineers use comprehensive, state-of-the-art technology to provide fast, quality and accurate independent investigation and reporting in Non-Destructive Foundation Testing, Structural Diagnosis and the supply, installation and monitoring of Geotechnical Instrumentation.

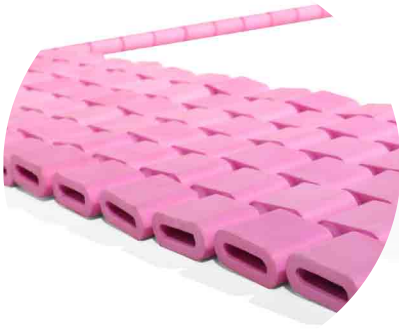
Offering the widest range of services in the Building Inspection Industry, ETL's Structural Diagnostics team is made up of personnel who are qualified from internationally-recognised institutions who offer services such as Infrared Thermography, Ground Penetrating Radar and Laboratory Combined Load Test where the load is applied in 2 perpendicular directions simultaneously. The team also benefits from the support of other in-house services, such as the Calibration and Environmental departments.

Our professional engineers have worked on major civil and construction projects such as the Star Cruise Terminal, Sky Pier HKIA, Hong Kong-Zhuhai-Macau Bridge, Express Rail Link, the conversion of the Murray Building into a hotel, remodeling of the New World Center, MTR Sha Tin to Central Express Rail Link and Public Housing developments, amongst others.

監測  
MONITORING



陶瓷塊及電熱陶瓷塊墊  
CERAMIC BEADS &  
HEATER PADS



電纜和電線  
CABLES &  
WIRES



溫度測量  
TEMPERATURE  
MEASURING



### 貿易

東業德勤貿易有限公司 (www.etl-trade.com) 成立於二零零一年，是全球其中一間領先的熱處理配件及設備的製造商和分銷商，服務來自世界各地不同的顧客。憑著多年累積的經驗，以及提供高品質的產品和卓越的客戶服務，使我們成為可靠的供應商，獲得良好的口碑。

我們擁有廣泛的供應商和製造商網絡，使我們能夠按客人特定需求，提供度身定做的生產服務；我們亦提供多種貨運方法、盡力於客人指定時間及預算內將貨物送到客人手中。

我們所銷售的機器、機器配件和工具，都依照國際電工委員會的監管標準，整個生產程序都經過嚴格的質量檢查和複核，務求滿足甚至超越顧客的期望。

東業德勤貿易有限公司提供一站式的服務，能解答和滿足您所有對熱處理配件或儀器的問題和需要。歡迎瀏覽我們的網址www.etl-trade.com內的產品目錄，查看完整的產品規格及細節。如果您需要特別的貨品又未能在目錄內找到，請與我們聯絡，我們定努力實現您的需求。

### Trading

Founded in 2001, ETL Trade Ltd. (www.etl-trade.com) is one of the world's leading manufacturers and distributors of Heat Treatment Products and Equipment, servicing clients from across the globe. Our years of experience have earned us the reputation of being a reliable supplier, providing high-quality products and offering exceptional customer service.

Our extensive network of suppliers and manufacturers allow us to offer customized manufacturing services to meet our customer's specific requirements. We offer a variety of shipment methods to best suit your time and budgetary requirements.

The machinery, components and tools available are all subjected to our extensive in-house quality assurance and control processes before, during and after manufacturing. We are regulated by IEC standards and always strive to exceed consumer expectations.

ETL Trade Ltd. is a one-stop shop to answer all your heat treatment needs. Please visit our online catalogue at www.etl-trade.com for full product specifications and details. Should you require something specific that is not shown in our catalogue range, please contact us as we always endeavor to fulfill any bespoke requests.

# 董事及管理團隊 MEET THE EXPERTS

## 高級管理人員 Senior Management



J. Alistair Fraser  
常務董事  
Managing Director



宋書全  
Stephen S. C. Sung  
董事  
Director



邵達誠  
Stewart Saunders  
董事  
Director



陳國輝  
Alex K. F. Chan  
董事，財務與企業服務  
Director, Finance & Corporate Services



黃耀強  
Tony Y. K. Wong  
營運董事  
Operations Director

## 高級營運管理 Senior Operations Management



徐志強  
David C. K. Tsui  
高級技術經理  
物理試驗及檢驗服務  
Senior Technical Manager  
Physical Testing & Inspection Services



劉懷安  
Vincent W. O. Lau  
無損探傷助理經理  
物理試驗及檢驗服務  
Assistant NDT Manager  
Physical Testing & Inspection Services



孔慶海  
Simon H. H. Hung  
總經理 - 建築服務  
建築材料測試，結構勘察及儀器裝置  
General Manager - Construction  
Construction Materials & Structural  
Diagnostics & Instrumentation



鄭溢峰  
Ricky Y. F. Cheng  
營銷經理 / 總經理(中國業務)  
Marketing Manager /  
General Manager (China Business)

## 營運管理 Operations Management



江炳奇  
Guy P. K. Kong  
實驗室經理  
環境，化學及微生物分析  
Laboratory Manager  
Environmental, Chemical &  
Microbiology



李小峯  
Clifford S. F. Lee  
監督  
石棉  
Supervisor  
Asbestos



陳志偉  
Stephen C. W. Chan  
質量保證經理  
校準服務  
Quality Assurance Manager  
Calibration Services



李福英  
Yammie F. Y. Lee  
高級貿易主任  
貿易  
Senior Trading Officer  
Trading





8/F Block B, Veristrong Industrial Centre, 34-36 Au Pui Wan Street, Fo Tan, Hong Kong  
T: +852 2695 8318      F: +852 2695 3944      E: [etl@ets-testconsult.com](mailto:etl@ets-testconsult.com)      W: [www.ets-testconsult.com](http://www.ets-testconsult.com)